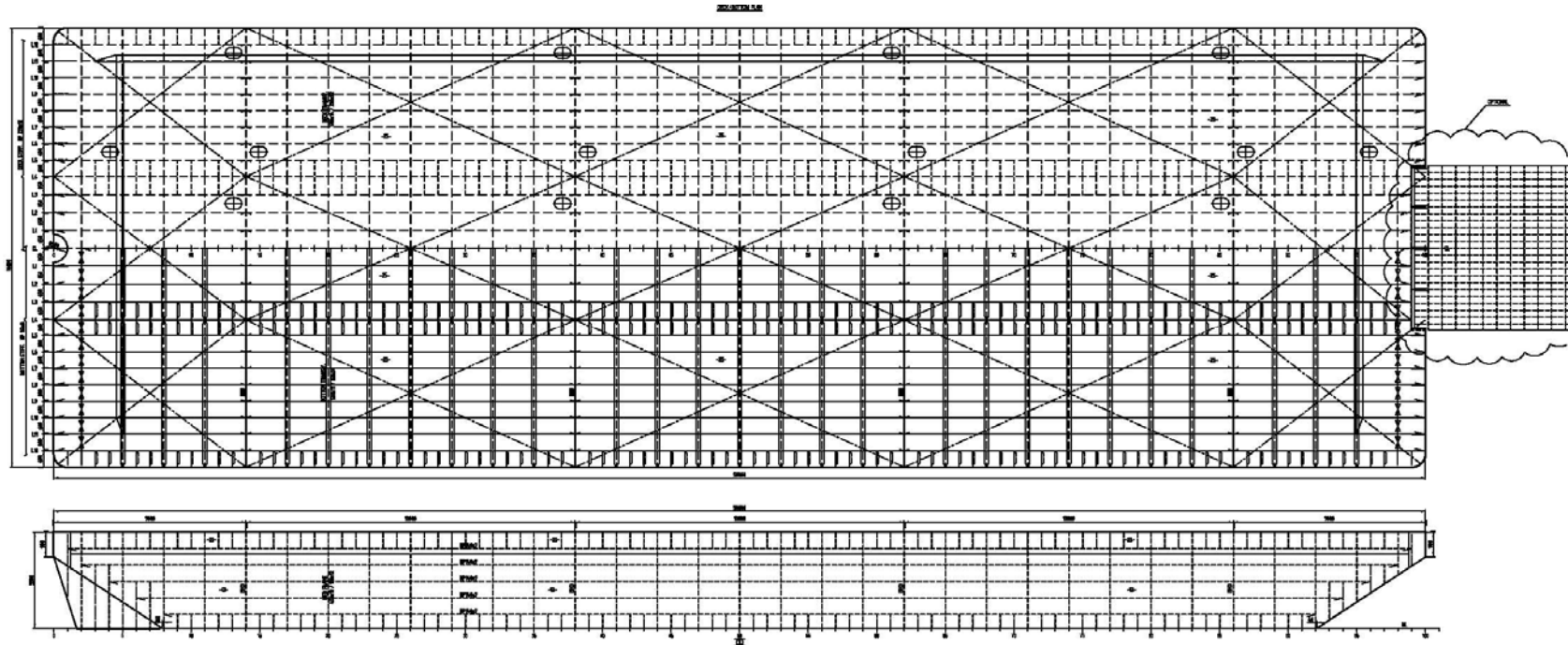


project BULGATECH BARGE



The BULGATECH BARGE concept is based on flexible use for all kind of purposes and available in various lengths.

The high deck-load of 20 mT/m² is the solid base for Multi Purpose use. Many options for custom-suitable use can be easily integrated in the concept.

Main particulars BULGATECH BARGE.

Length moulded: available till 100 mtr
 Breadth moulded: available till 32.00 mtr.
 Depth: various from 3.50 mtr.

Deckload: 20 mT/m²
 Optional: Engineroom / Technical space, stores, accommodation, ramp(s), spudpoles.